

2009 Military/Civilian Transportation Safety Workshop

**Traffic Records Electronic Data System
(TREDS)**

Reports Used At The Highway Safety Office



Reports Being Used

Problem identification on major safety areas

- Overall Crashes/Fatalities/Injuries
 - Impaired driving
 - Occupant protection
 - Speeding
- Motorcycle safety
 - Bike safety
 - Pedestrian safety
 - Young/Adult/Mature drivers



Reports Being Used (Cont')

- **Develop countermeasures to set goals in an effort to reduce crashes/fatalities/injuries**
- **Respond to data requests by state/local and federal agencies, media, legislative staff, judiciary, etc.**
- **Plan, implement and evaluate highway safety programs**
- **Report on and analyze specific areas that requestors or HSO staff want to focus on**
- **Trend data analysis and forecasting**



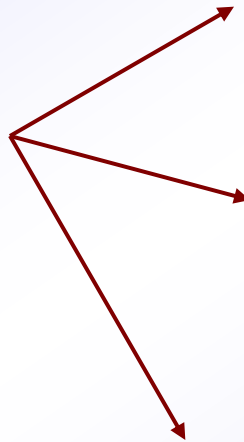
TREDS Reporting Query Tool

- **Direct access to crash data and generate reports**
- **Query the crash data from the central office and anywhere else**
- **Offer different types of reports depending on specific needs**



Three Types of TREDS Reports

TREDS Reporting



Standard Report

Canned Report

Ad-Hoc Report



Standard Report

- **It is already created**
- **No effort to the user**
- **Used to produce the Virginia Traffic Crash Facts document**



Canned Report

- **Allows any authorized user to extract and create crash data reports with minimal effort**
- **Helpful when the user wants a quick and simple crash report**



Ad-Hoc Report

- **Used when standard or canned reports do not provide sufficient detail or specific crash data needs**
- **Advanced query allow user to customize his/her own reports**
- **Table report and matrix reports are 2 types of ad-hoc reports**

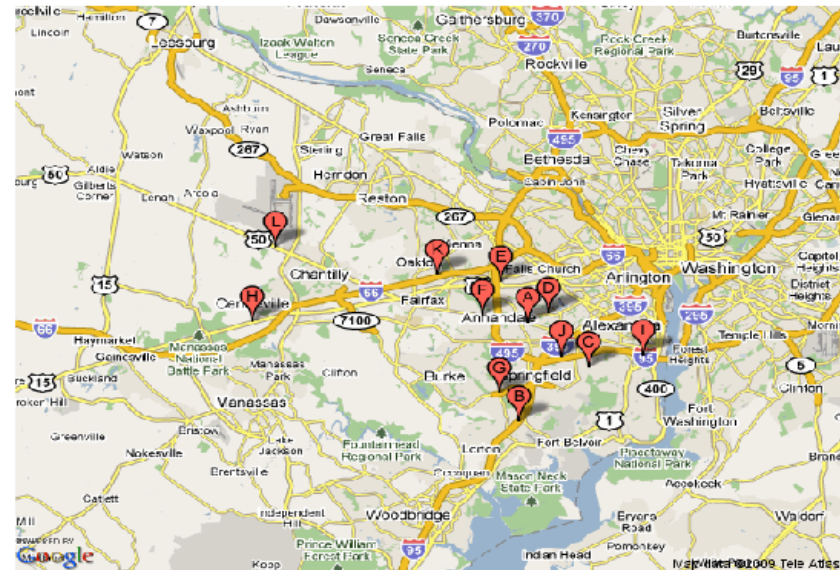


What Else Do We Need To Be Doing?

**HSO will have the ability to show crash
data on specific location maps and
show high crash location analysis
based on LE reporting of latitude/longitude**

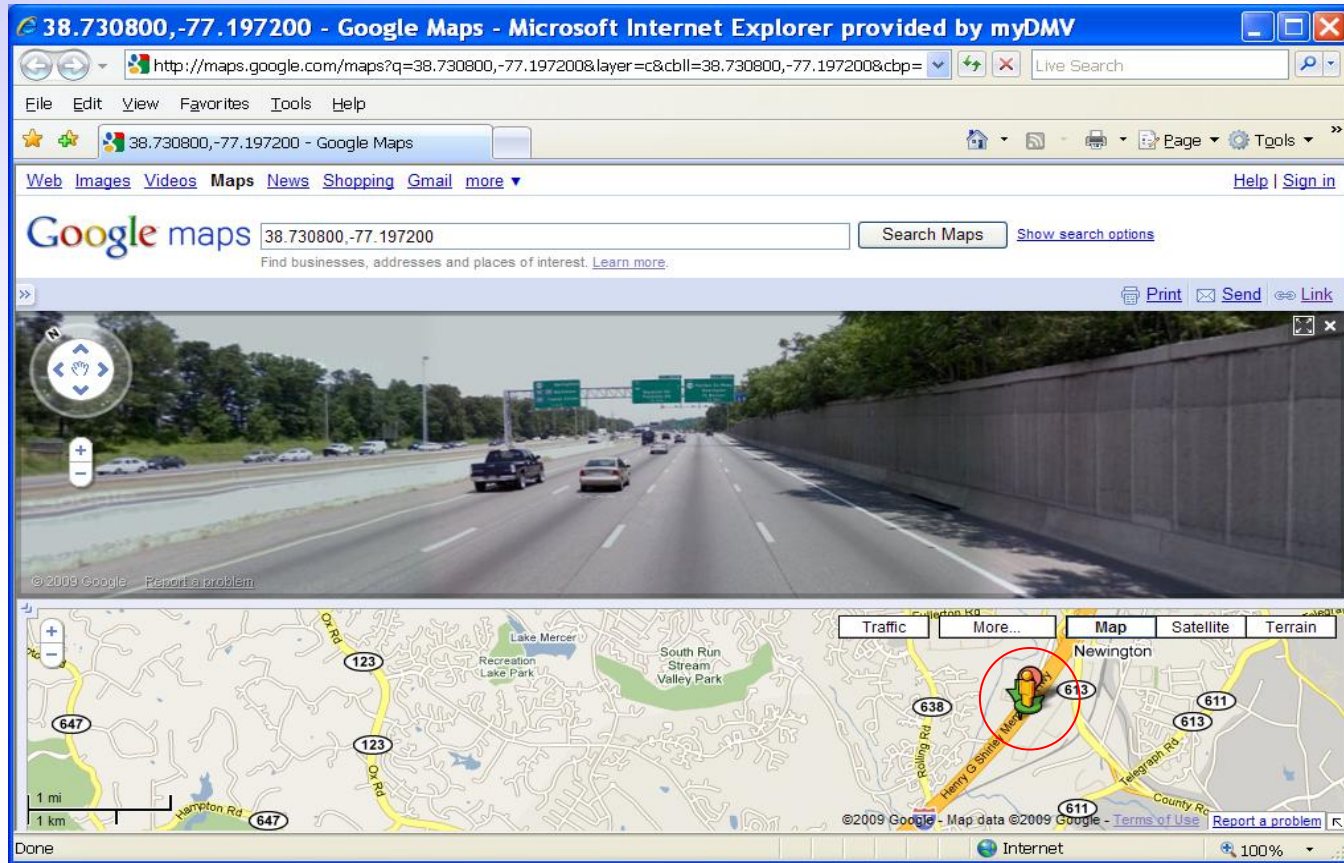
What Else Do We Need To Be Doing?

TREDS Crash Locations Demonstration



Marker ID	Document Number	Latitude	Longitude	Street View
a	080560435	38.828610	-77.187778	Click Here
b	080575097	38.730800	-77.197200	Click Here
c	081260017	38.785278	-77.123333	Click Here
d	081260020	38.838056	-77.164722	Click Here
e	082530004	38.868900	-77.216100	Click Here
f	082880004	38.836100	-77.235300	Click Here
g	083110016	38.759400	-77.217500	Click Here
h	083310016	38.829700	-77.479400	Click Here
i	083310018	38.796100	-77.064400	Click Here
j	083395161	38.795800	-77.151900	Click Here
k	083395162	38.875800	-77.283900	Click Here
l	083515214	38.903900	-77.455300	Click Here

What Else Do We Need To Be Doing?



What Else Do We Need To Be Doing?

- **Forecasting analysis abilities based on historical and real-time crash data**
- **Generate reports on other highway related data as the result of linking crash and other data such as citations, convictions, EMS, driver and vehicle data**



**Before taking your questions/suggestions.
I would like to show you how the HSO staff
creates the reports using the TREDIS
reporting system**

